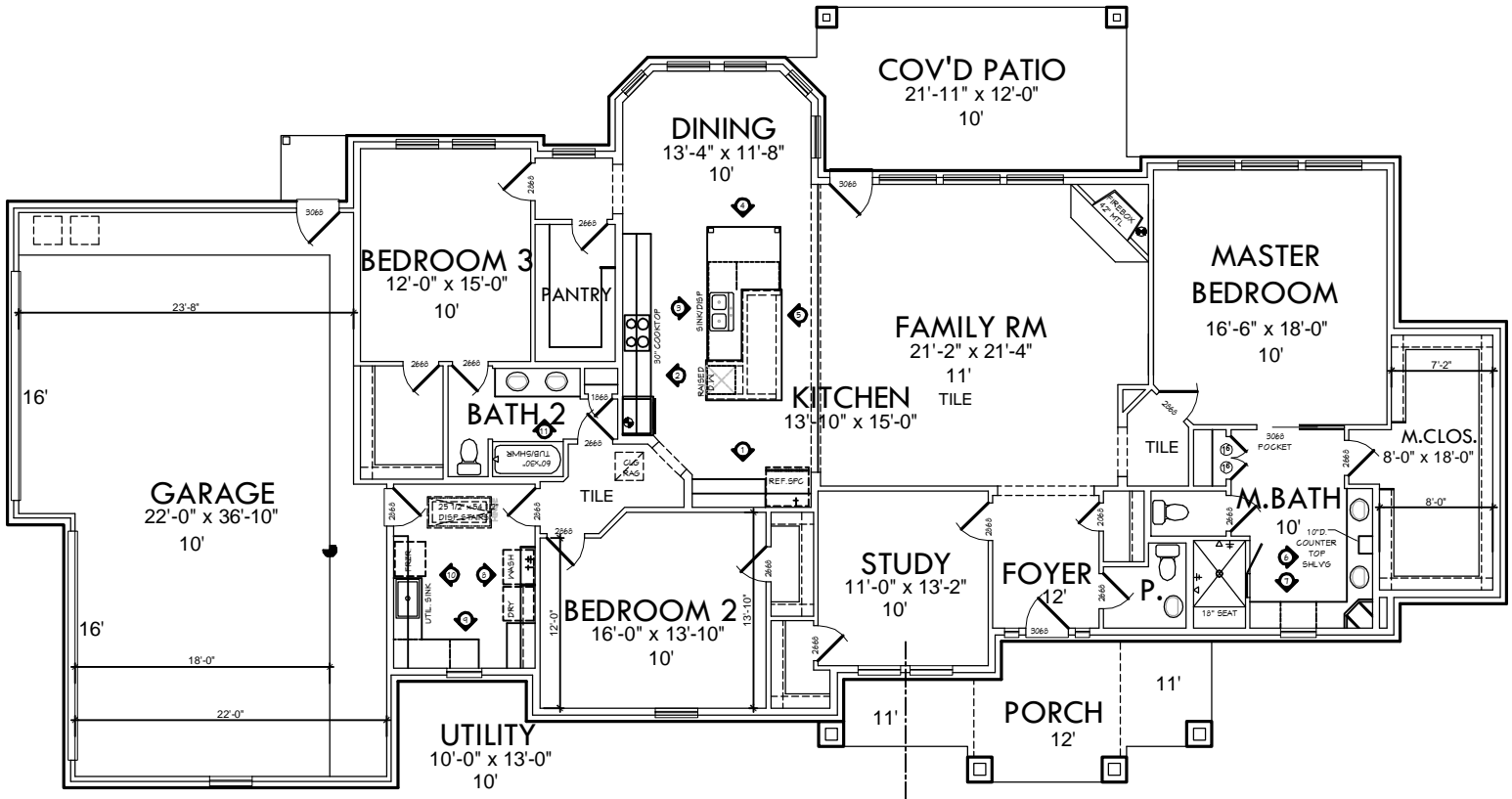


# KURK★HOMES

Custom Builders



first floor -	2944
second floor -	0
total -	2944
porch/patio -	469
garage -	995
total cov'd-	4408

*Tucker Residence*



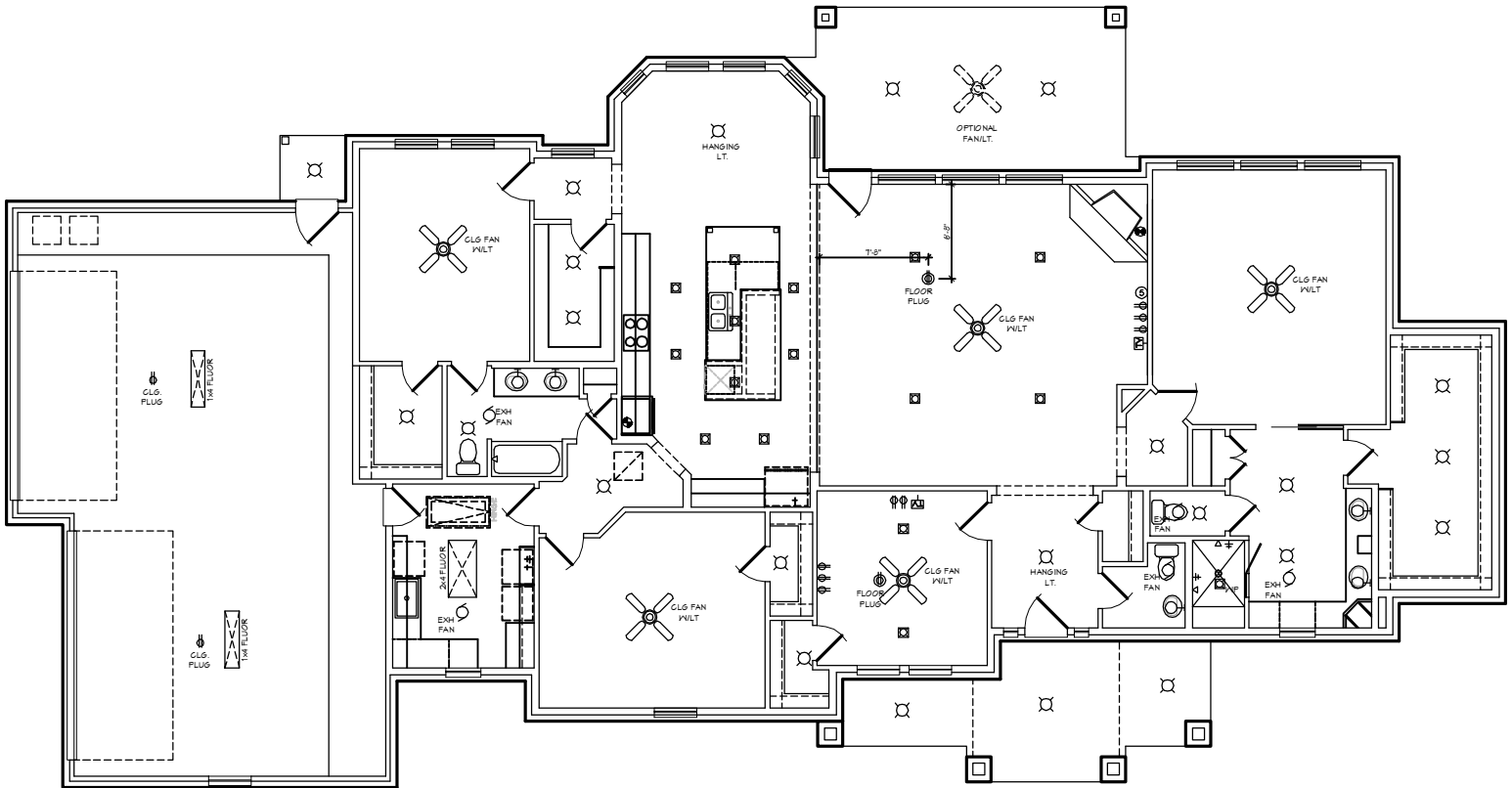
11 Jun 12

Plans, specifications, community amenities, standard features, availability and prices are subject to change without notice. Calculations for square footage are approximate.

12-013  
0000  
105'-11" x 55'- 1-1/2"

# KURK★HOMES

Custom Builders



## Tucker Residence



11 Jun 12

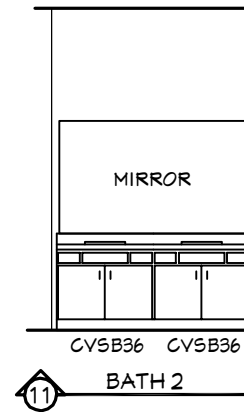
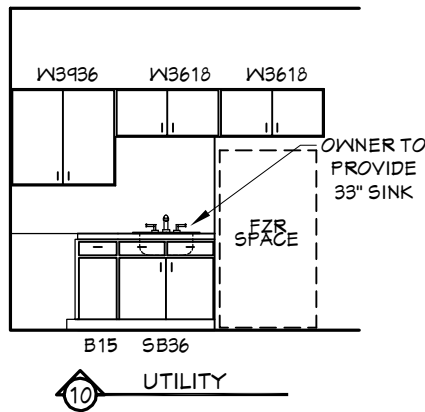
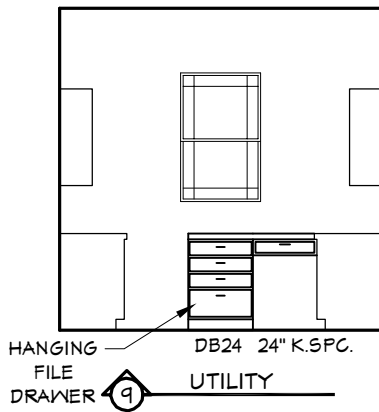
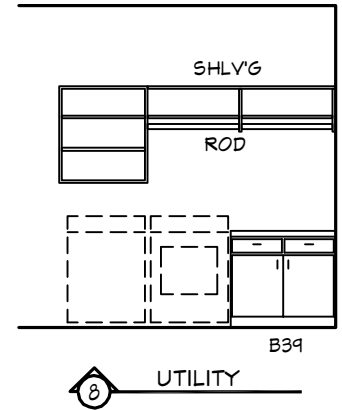
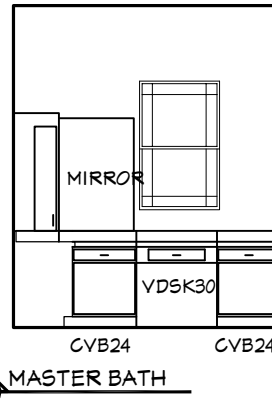
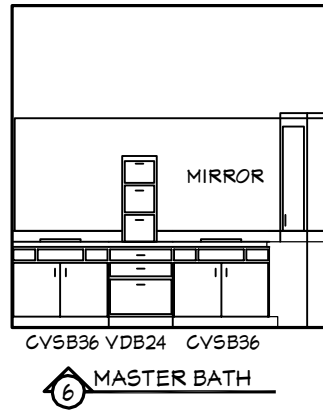
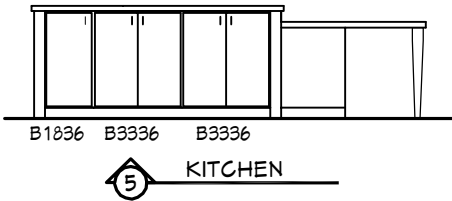
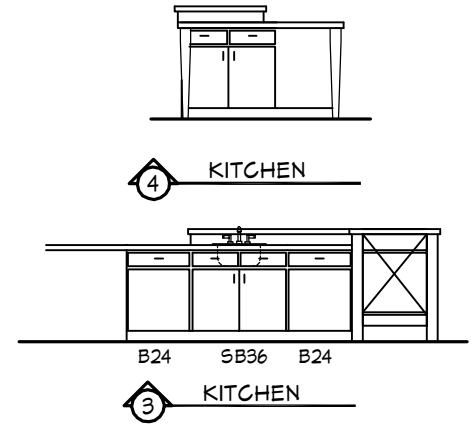
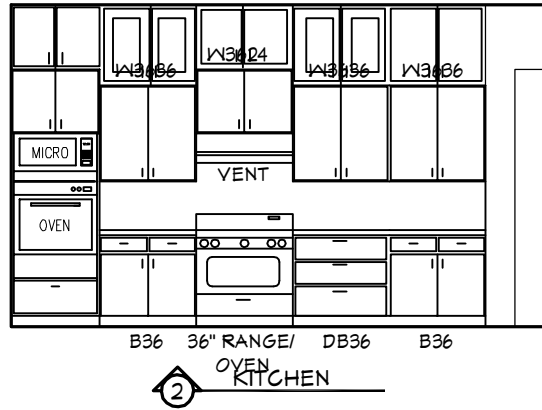
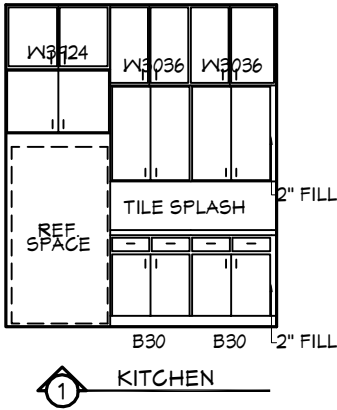
Plans, specifications, community amenities, standard features, availability and prices are subject to change without notice. Calculations for square footage are approximate.

12-013  
0000

105'-11" x 55'- 1-1/2"

# KURK★HOMES

## Custom Builders



11 Jun 12

Plans, specifications, community amenities, standard features, availability and prices are subject to change without notice. Calculations for square footage are approximate.

*Tucker Residence*

12-013  
0000

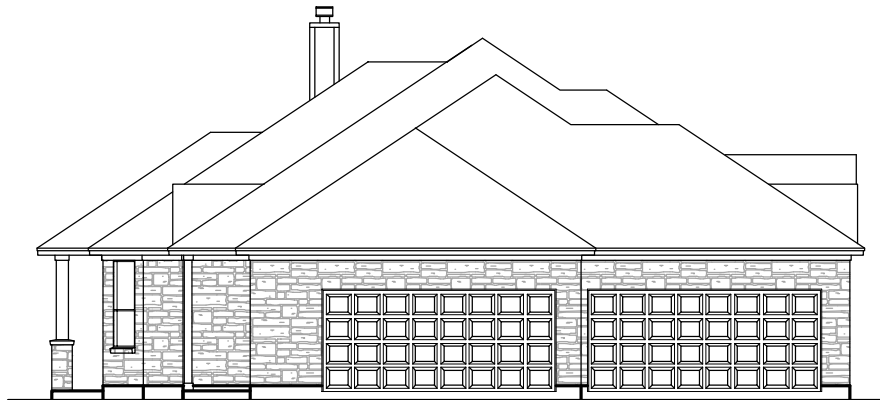
105'-11" x 55'-1-1/2"

# KURK★HOMES

Custom Builders



FRONT ELEVATION



LEFT SIDE

51%  
coverage

*Tucker Residence*



11 Jun 12

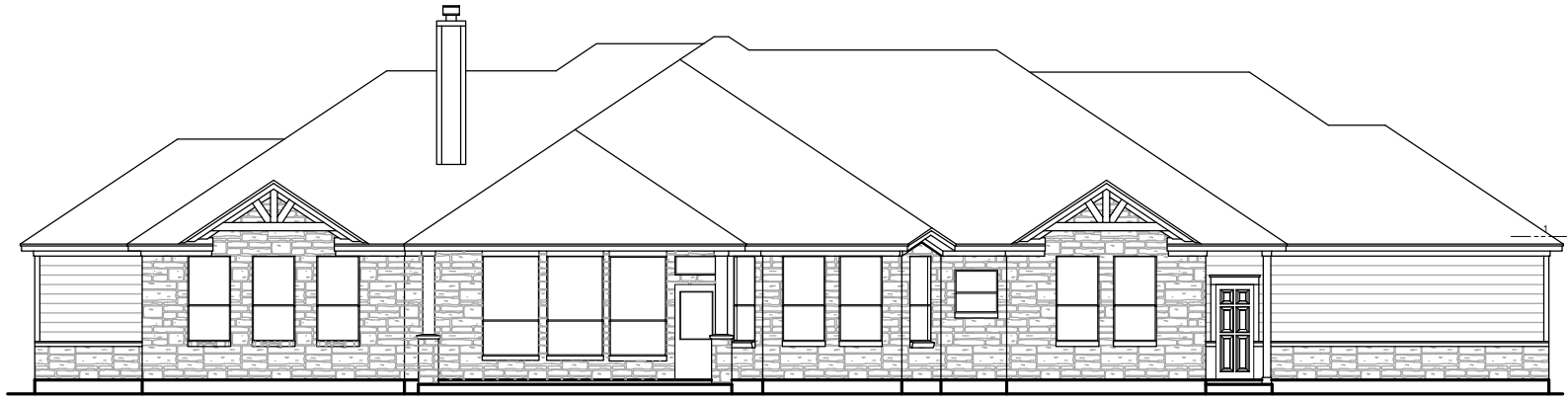
Plans, specifications, community amenities, standard features, availability and prices are subject to change without notice. Calculations for square footage are approximate.

12-013  
0000

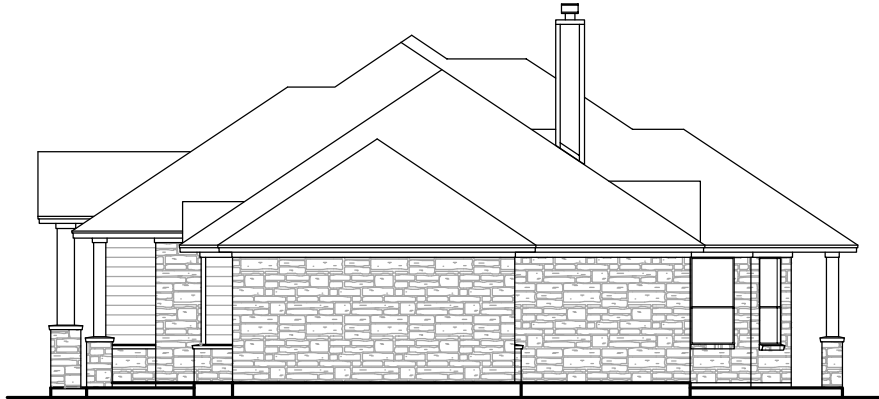
105'-11" x 55'- 1-1/2"

# **KURK★HOMES**

*Custom Builders*



REAR ELEVATION



RIGHT SIDE

*Tucker Residence*



11 Jun 12

Plans, specifications, community amenities, standard features, availability and prices are subject to change without notice. Calculations for square footage are approximate.

12-013  
0000

105'-11" x 55'- 1-1/2"