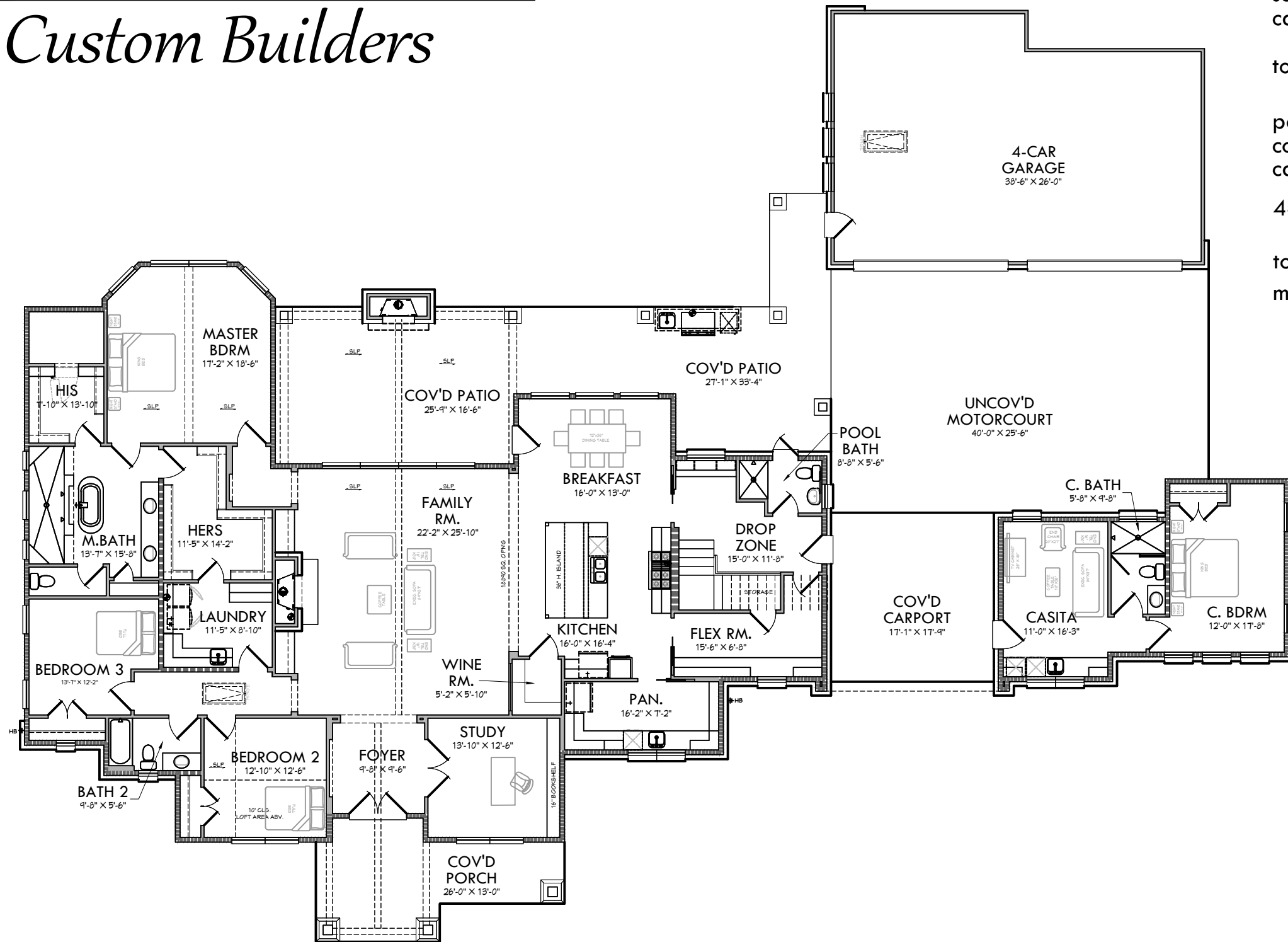


# KURK★HOMES

*Custom Builders*



|                       |             |
|-----------------------|-------------|
| first floor -         | 3532        |
| second floor -        | 817         |
| casita living -       | 567         |
| <b>total living -</b> | <b>4916</b> |
| porch -               | 244         |
| cov'd patio -         | 901         |
| car port -            | 303         |
| <b>4-car garage -</b> | <b>1004</b> |
| <b>total cov'd -</b>  | <b>7348</b> |
| motorcourt -          | 1003        |

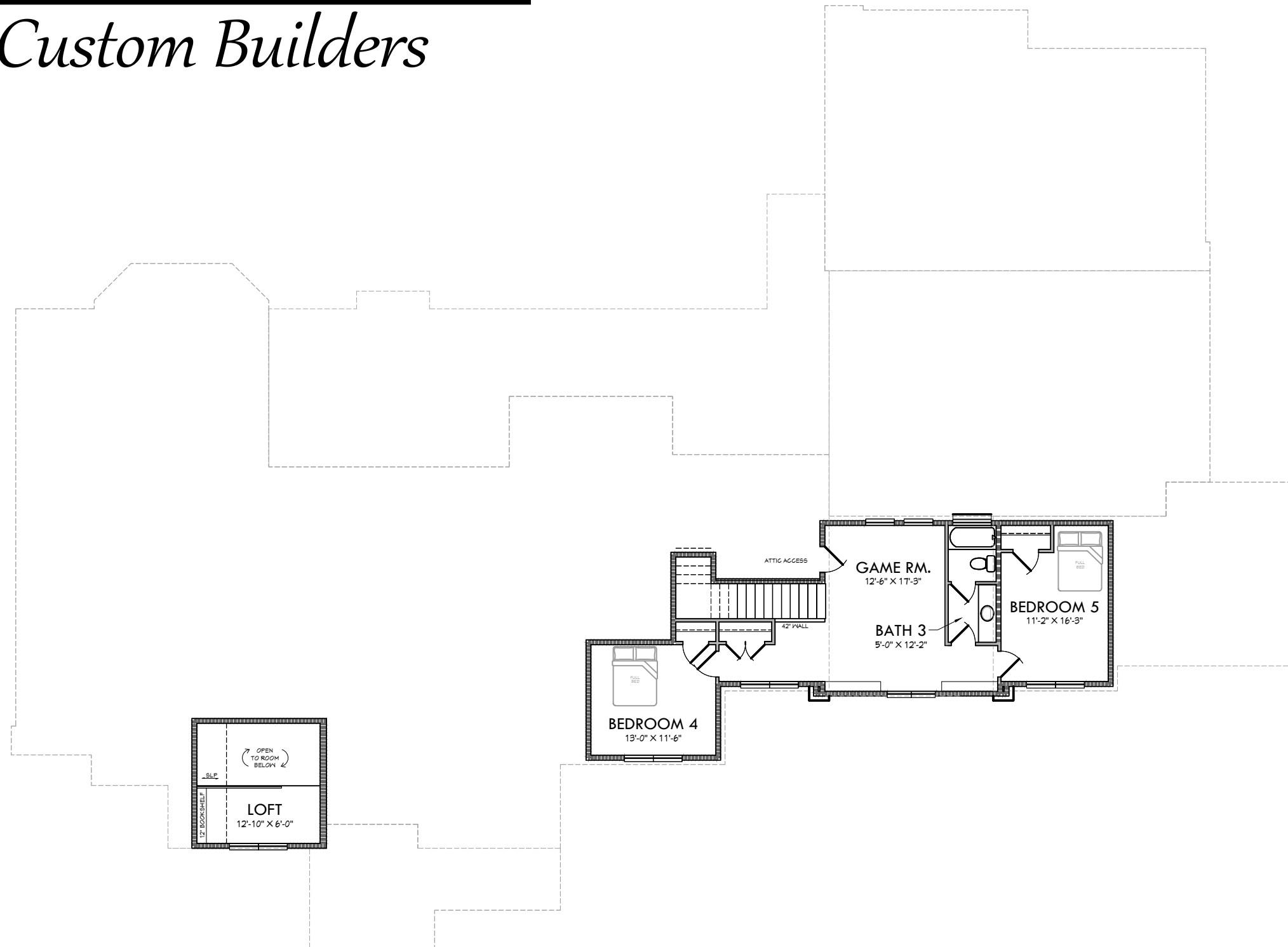
## River Run

depth - 98'-2"  
width - 133'-7"

Plans, specifications, community amenities, standard features, availability and prices are subject to change without notice. Calculations for square footage are approximate.

# KURK★HOMES

*Custom Builders*



## River Run

depth - 98'-2"  
width - 133'-7"

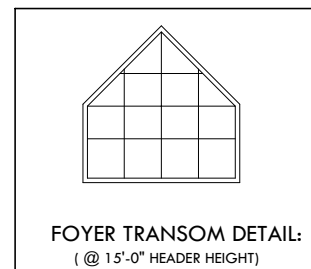
Plans, specifications, community amenities, standard features, availability and prices are subject to change without notice. Calculations for square footage are approximate.

# KURK★HOMES

*Custom Builders*



FRONT ELEVATION



RIGHT ELEVATION

## River Run

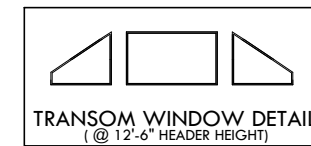
Plans, specifications, community amenities, standard features, availability and prices are subject to change without notice. Calculations for square footage are approximate.

# KURK★HOMES

*Custom Builders*



REAR ELEVATION



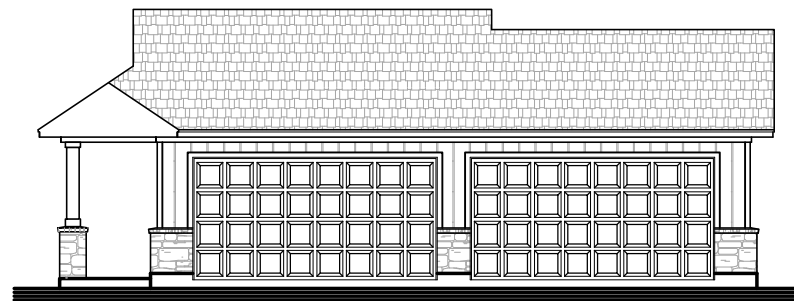
LEFT ELEVATION

# River Run

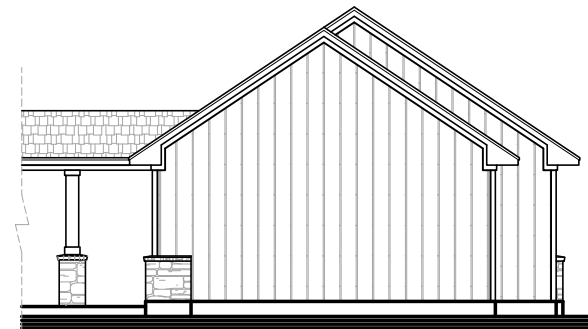
Plans, specifications, community amenities, standard features, availability and prices are subject to change without notice. Calculations for square footage are approximate.

# KURK★HOMES

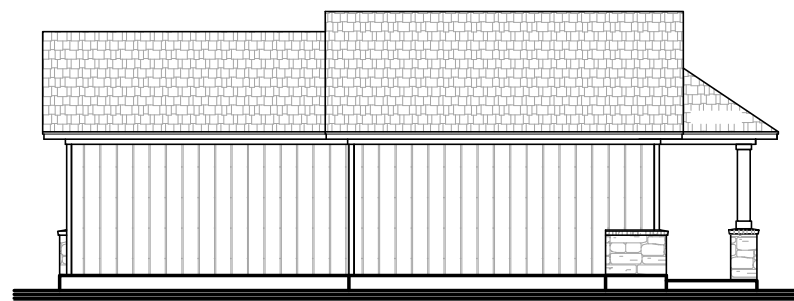
*Custom Builders*



GARAGE FRONT ELEVATION



GARAGE RIGHT ELEVATION



GARAGE REAR ELEVATION



GARAGE LEFT ELEVATION

## River Run

Plans, specifications, community amenities, standard features, availability and prices are subject to change without notice. Calculations for square footage are approximate.