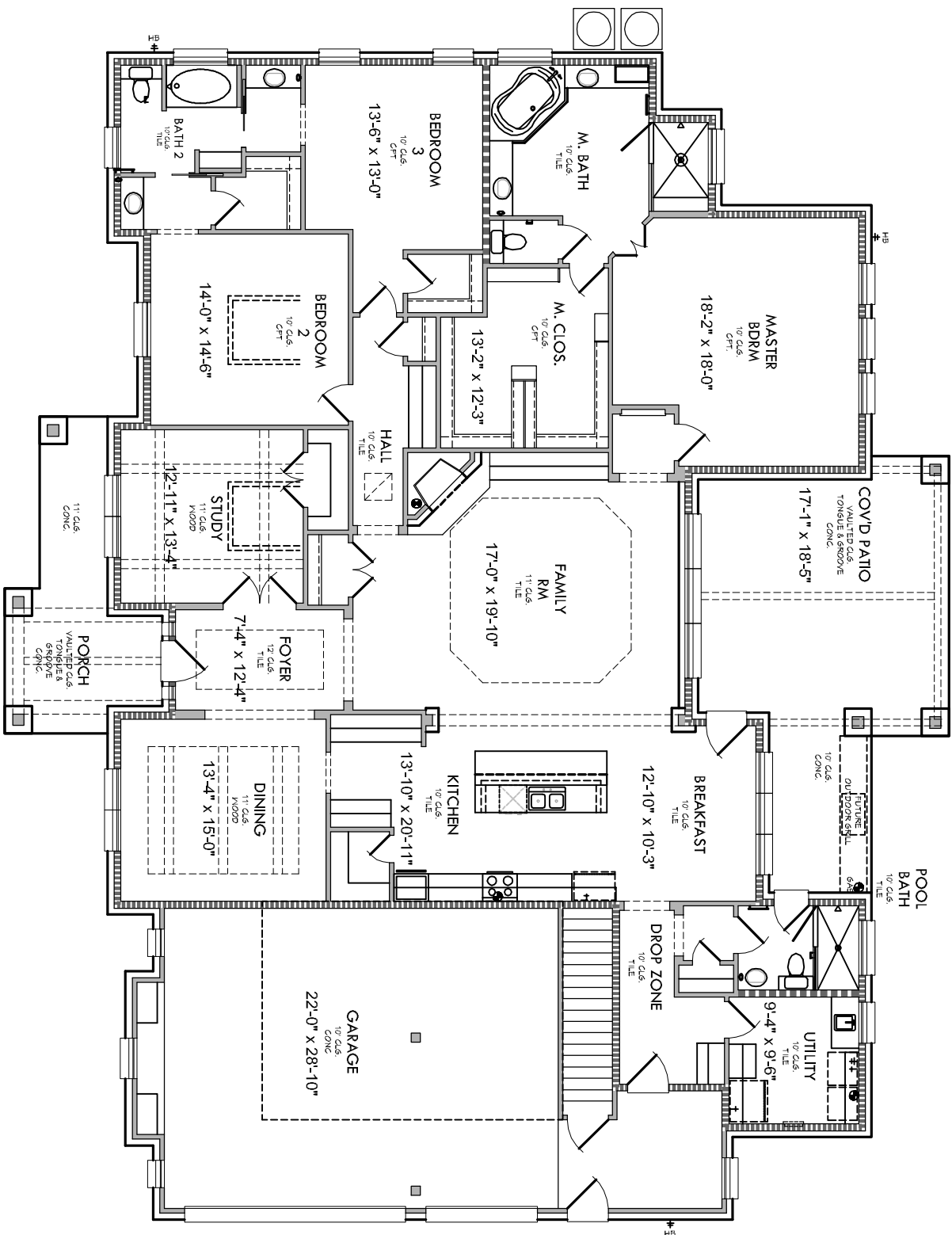


KURK ★ HOMES

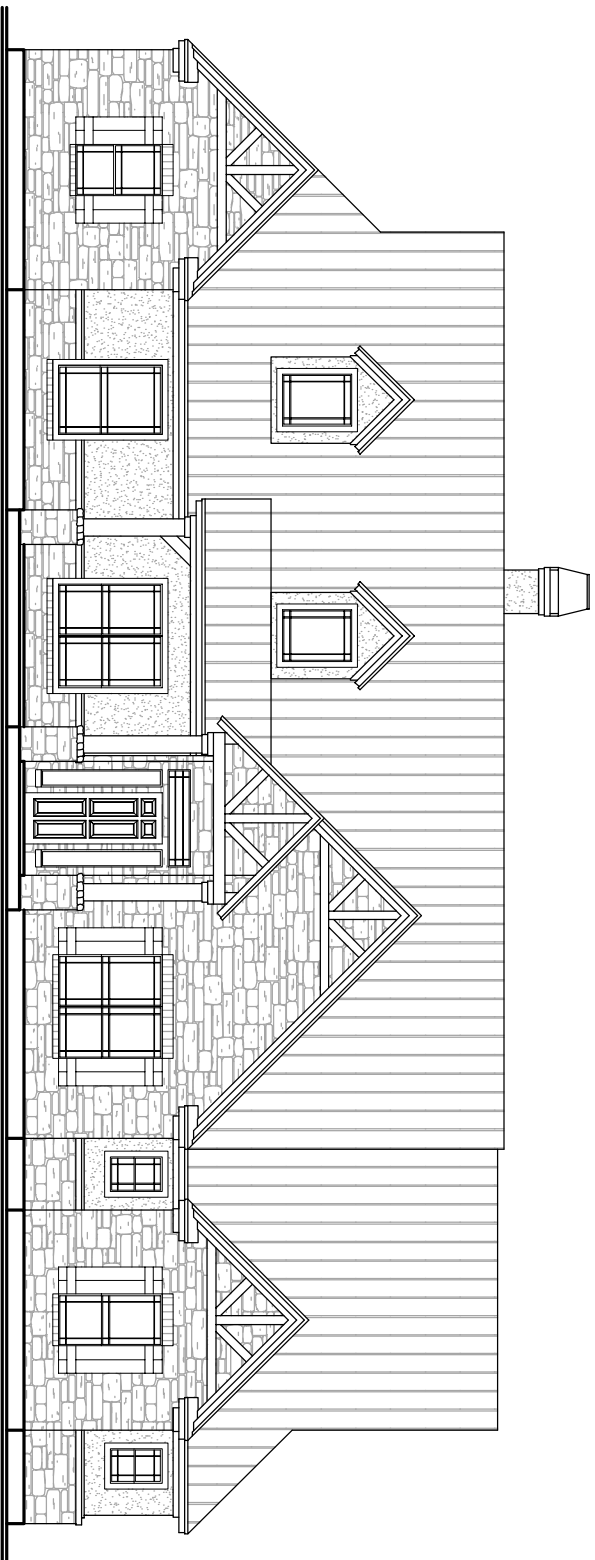
Custom Builders



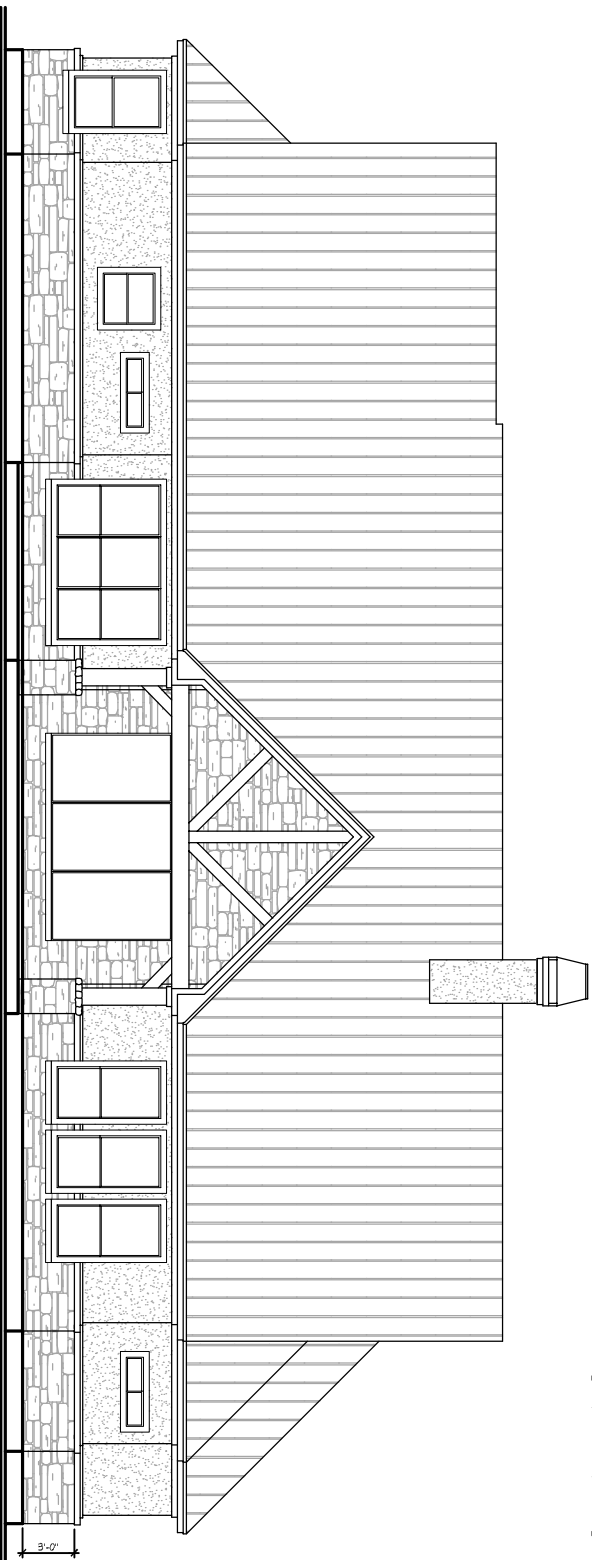
total living -	3284
porch -	169
cov'd patio -	431
garage -	872
mech. space -	352
total cov'd -	5108

WIDTH: 85'-5"
DEPTH: 69'-2"

KURK ★ HOMES
Custom Builders



FRONT ELEVATION



REAR ELEVATION

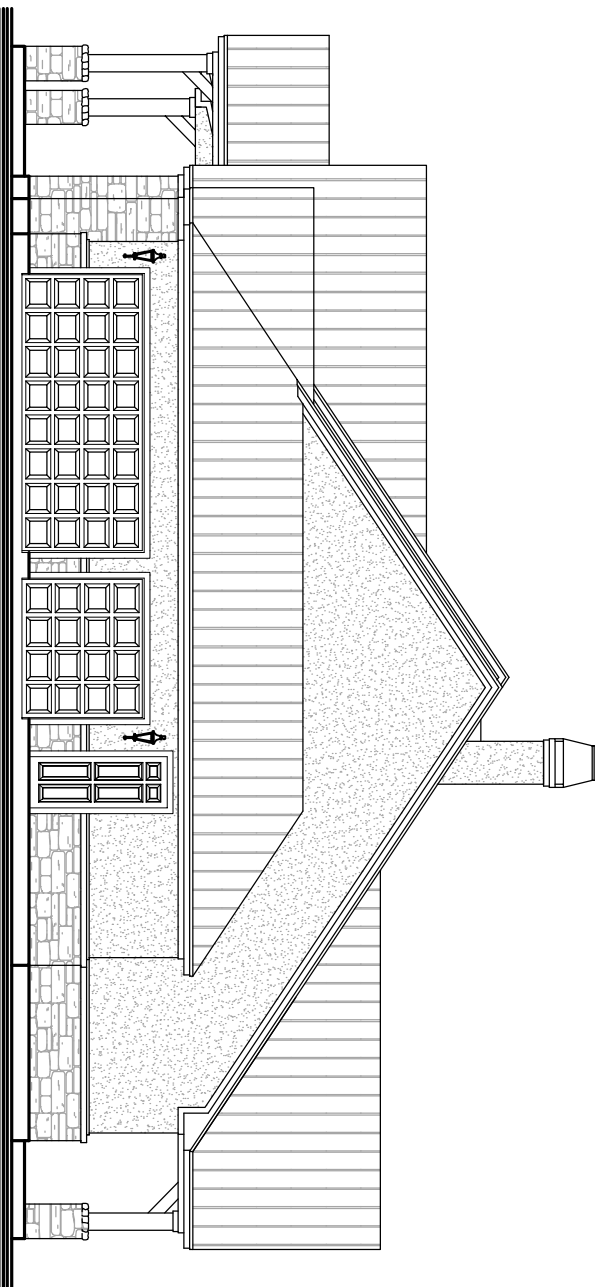
21 SEP 2015

Plans, specifications, community amenities, standard features, availability and prices are subject to change without notice. Calculations for square footage are approximate.

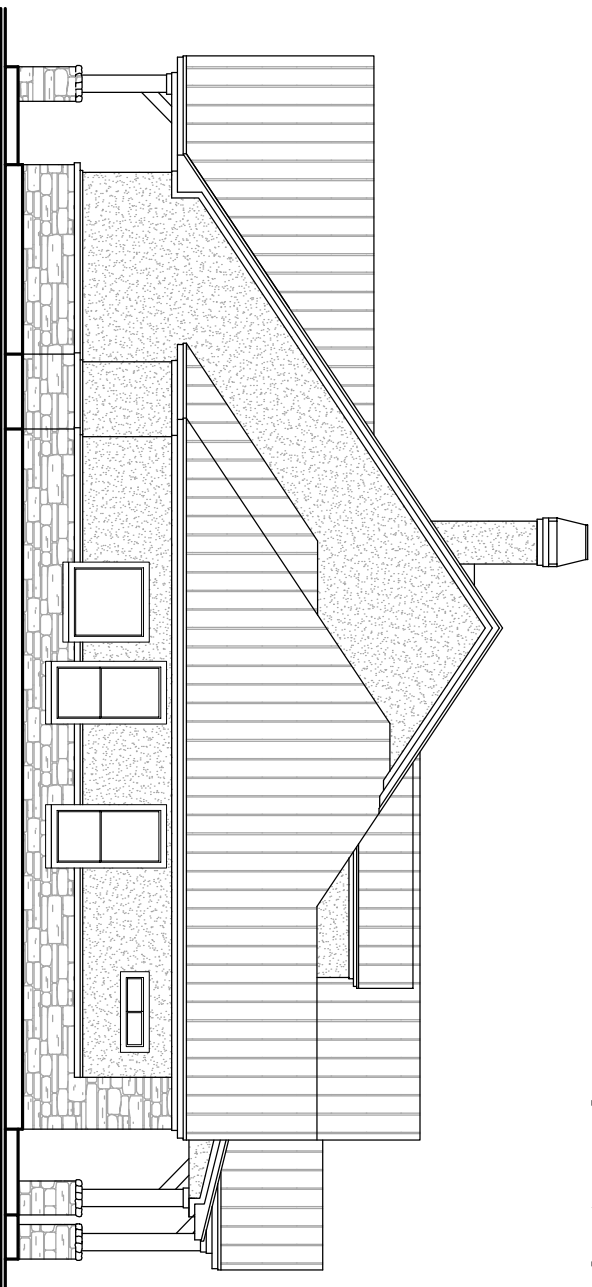
Copper Ridge Spec

1-3-055

KURK ★ HOMES
Custom Builders



RIGHT ELEVATION



LEFT ELEVATION

21 SEP 2015

Plans, specifications, community amenities, standard features, availability and prices are subject to change without notice. Calculations for square footage are approximate.

Copper Ridge Spec

1-3-055