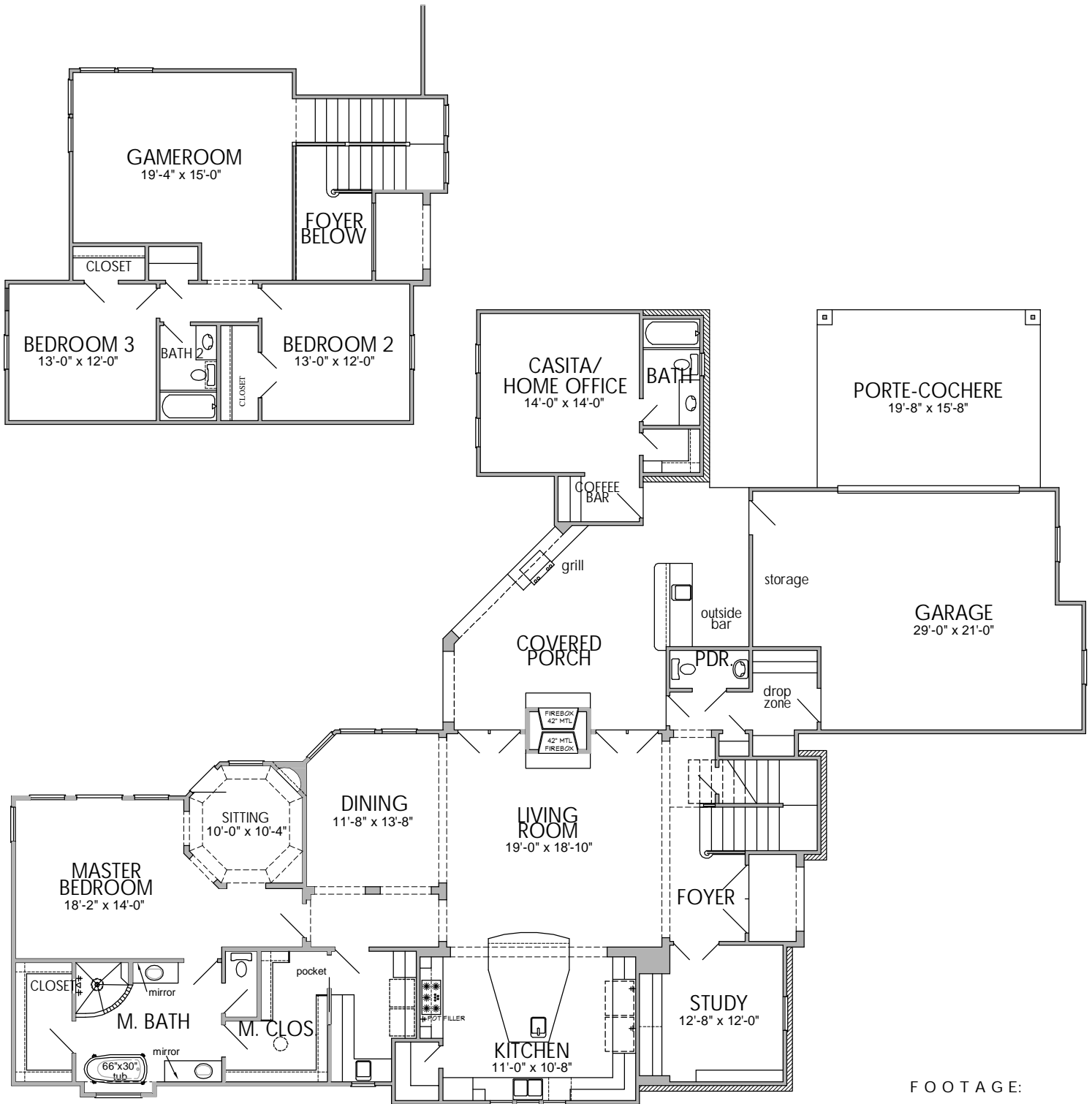


KURK★HOMES

Custom Builders



FOOTAGE:

1st FLOOR:	2180	SQ/FT
2nd FLOOR:	829	SQ/FT
CASITA	338	SQ/FT
TOTAL LIVING:	3347	SQ/FT
GARAGE:	571	SQ/FT
PORCHES:	463	SQ/FT
SLAB:	3552	SQ/FT
TOTAL COVERED:	4381	SQ/FT

Sanford Residence

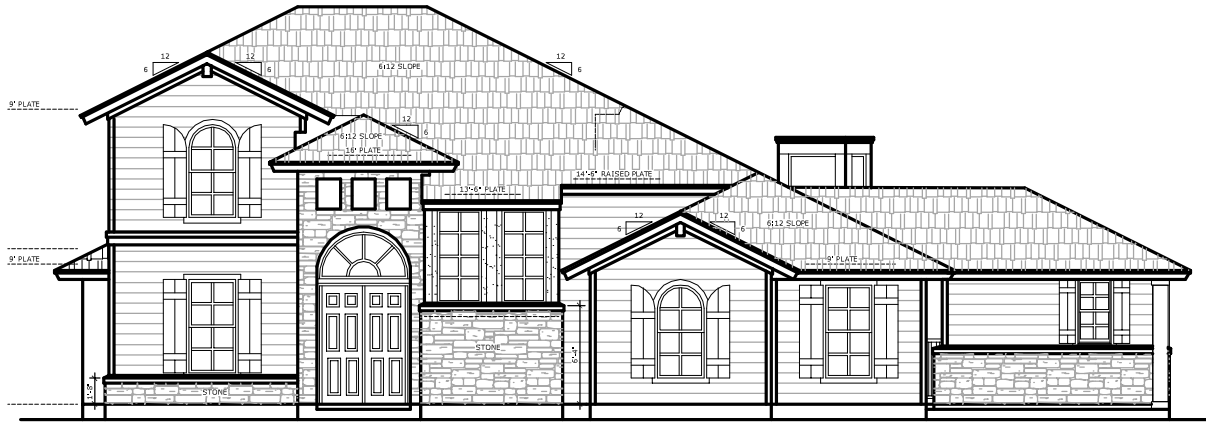
10-016
3347
70'-0" x 94'-8"



17 Jan 11

Plans, specifications, community amenities, standard features, availability and prices are subject to change without notice. Calculations for square footage are approximate.

KURK★HOMES
Custom Builders



FRONT ELEVATION



21 Jan 11

Plans, specifications, community amenities, standard features, availability and prices are subject to change without notice. Calculations for square footage are approximate.

Sayford Residence

10-016
3347
70'-0" x 94'-8"